



*Supplement of*

**Seasonal variation of ozone and black carbon observed at Paknajol, an urban site in the Kathmandu Valley, Nepal**

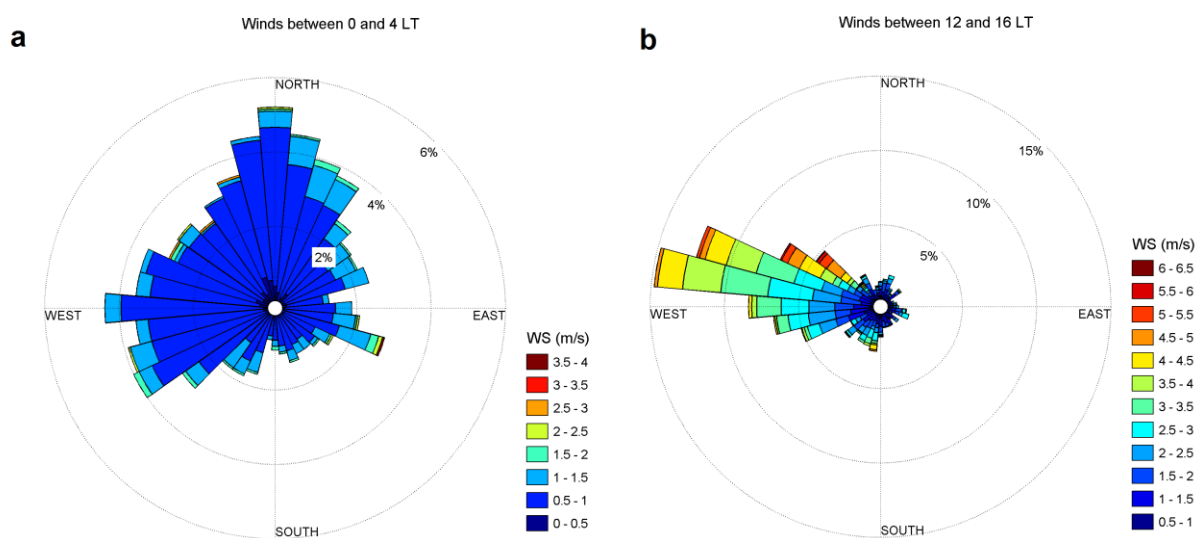
**D. Putero et al.**

*Correspondence to:* D. Putero (d.putero@isac.cnr.it)

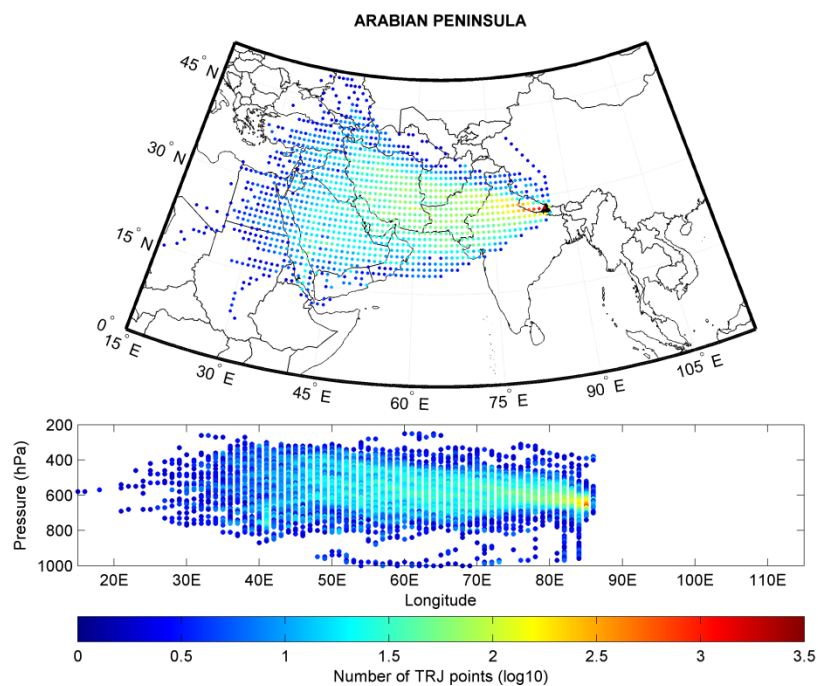
The copyright of individual parts of the supplement might differ from the CC-BY 3.0 licence.

**Table S1.** Correlation coefficients (r) between several parameters (BC, O<sub>3</sub>, accumulation and coarse particles, WS, T and RAD) for hourly and daily (in parentheses) values, over the whole sampling period, computed during convective hours only (i.e. between 11:00 and 17:00).

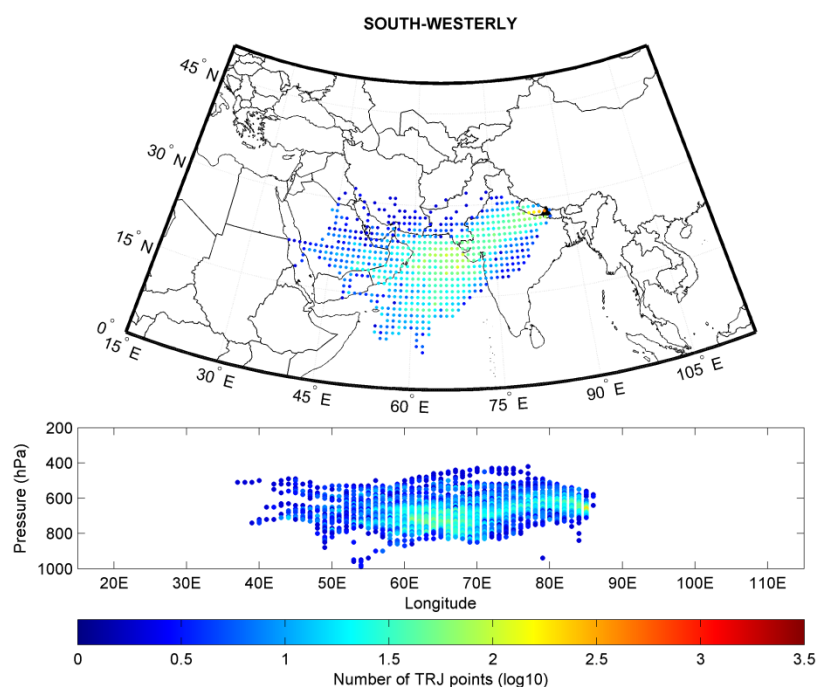
	O <sub>3</sub>	BC	Acc.	Coarse	WS	T	RAD
O <sub>3</sub>	-	0.20 (0.17)	0.62 (0.61)	0.51 (0.52)	0.16 (0.49)	0.18 (0.16)	0.50 (0.53)
BC	0.20 (0.17)	-	0.82 (0.81)	0.79 (0.71)	-0.35 (-0.24)	-0.44 (-0.58)	-0.10 (-0.36)
Acc.	0.62 (0.61)	0.82 (0.81)	-	0.79 (0.79)	-0.03 (0.15)	-0.13 (-0.13)	0.03 (-0.01)
Coarse	0.51 (0.52)	0.79 (0.71)	0.79 (0.79)	-	-0.06 (0.21)	-0.03 (0.03)	0.03 (0.04)
WS	0.16 (0.49)	-0.35 (-0.24)	-0.03 (0.15)	-0.06 (0.21)	-	0.28 (0.37)	0.11 (0.72)
T	0.18 (0.16)	-0.44 (-0.58)	-0.13 (-0.13)	-0.03 (0.03)	0.28 (0.37)	-	0.34 (0.50)
RAD	0.50 (0.53)	-0.10 (-0.36)	0.03 (-0.01)	0.03 (0.04)	0.11 (0.72)	0.34 (0.50)	-



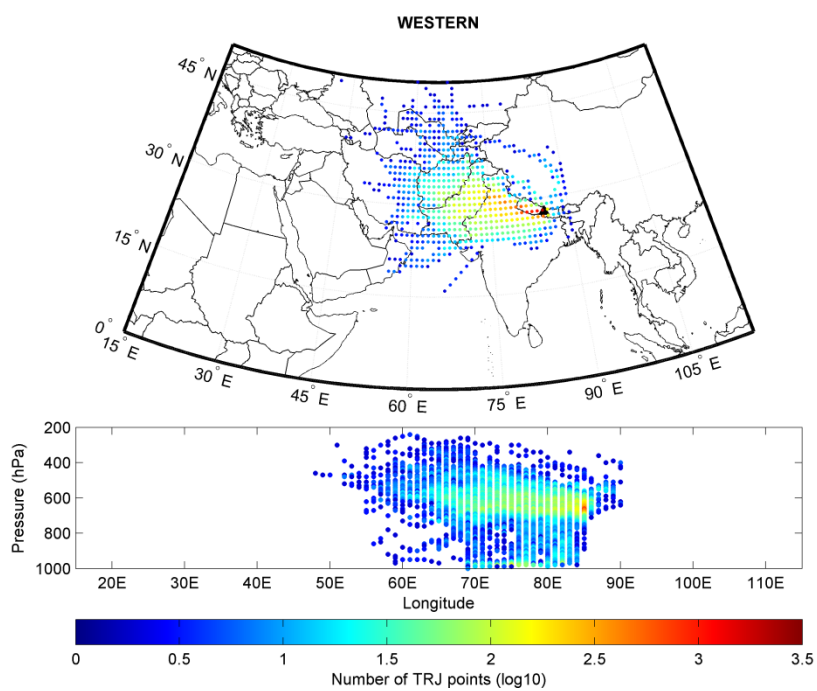
**Figure S1.** Wind direction and intensities for Paknajok. Panel a shows winds between 0:00 and 4:00, while panel b encloses winds between 12:00 and 16:00.



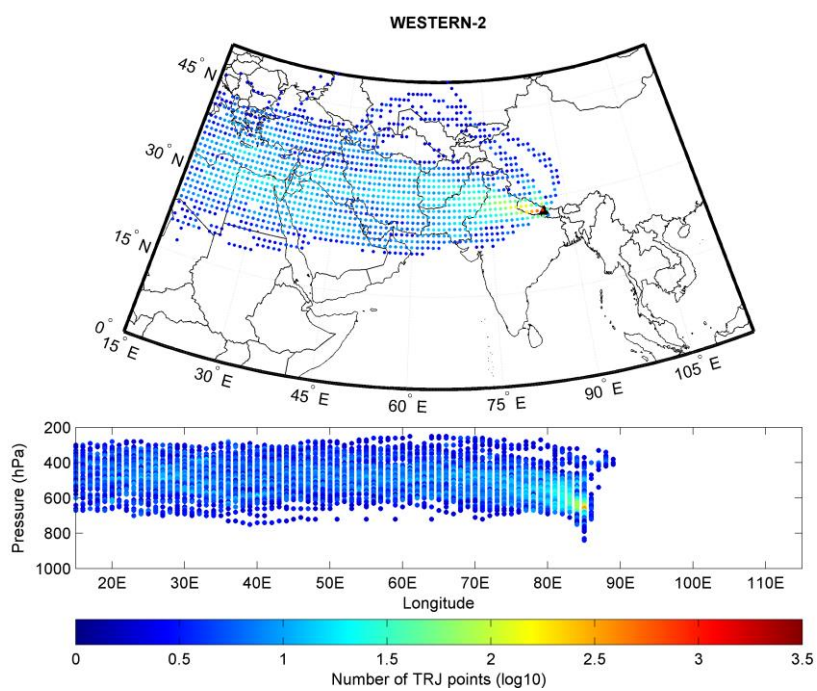
**Figure S2.** Concentration field (vertical cross section included) for HYSPLIT back-trajectory points ending at Paknajok, belonging to the Arabian Peninsula cluster. Trajectory points have been aggregated on a  $1^\circ \times 1^\circ$  grid in the upper plot and at vertical steps of 10 hPa  $\times 1^\circ$  in longitude in the bottom plot.



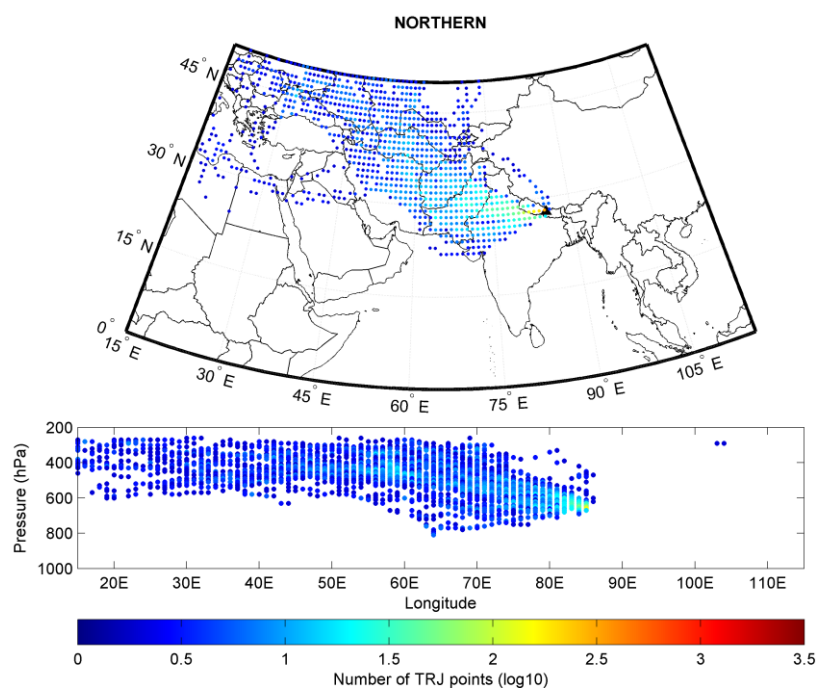
**Figure S3.** Same as Fig. S1, but for South-westerly cluster.



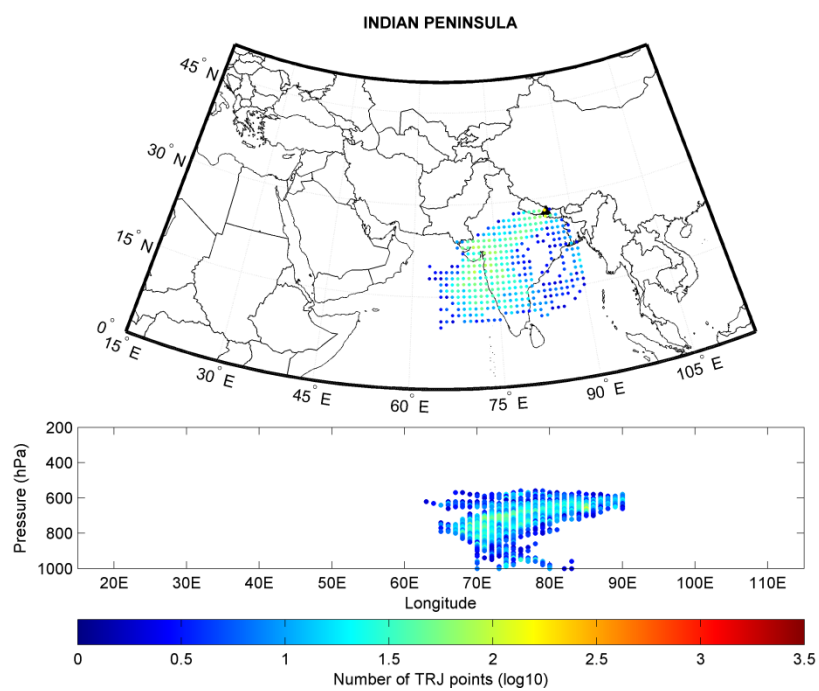
**Figure S4.** Same as Fig. S1, but for Western cluster.



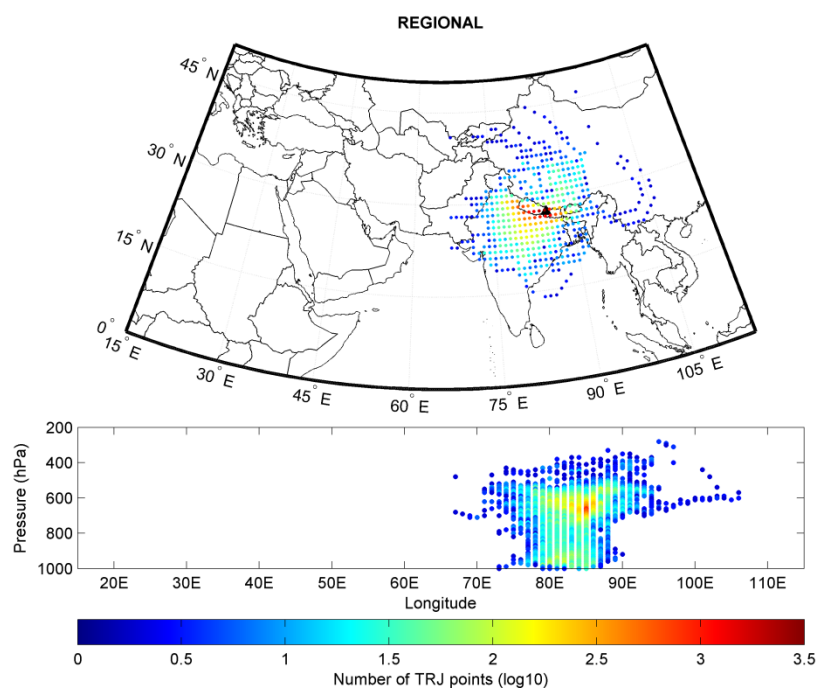
**Figure S5.** Same as Fig. S1, but for Western-2 cluster.



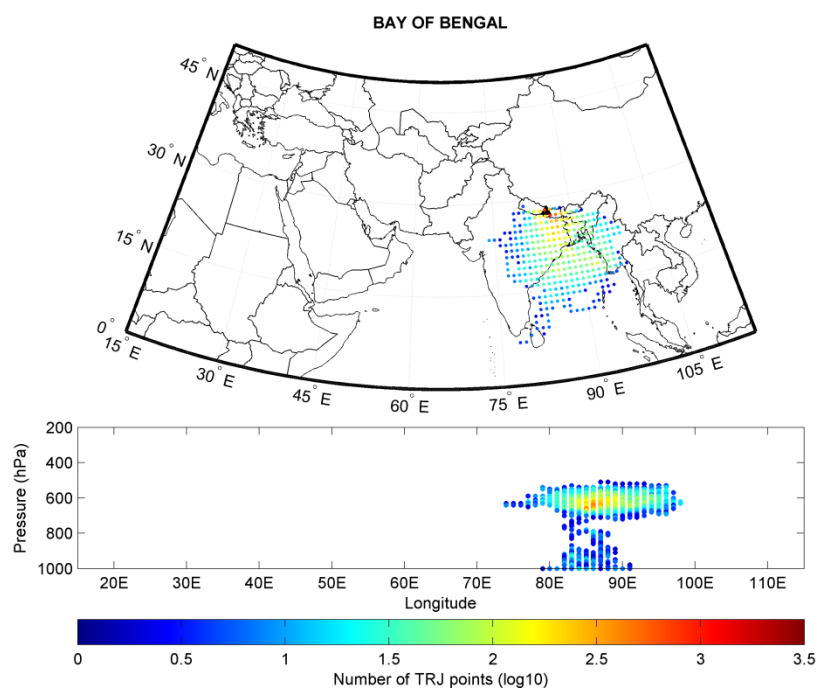
**Figure S6.** Same as Fig. S1, but for Northern cluster.



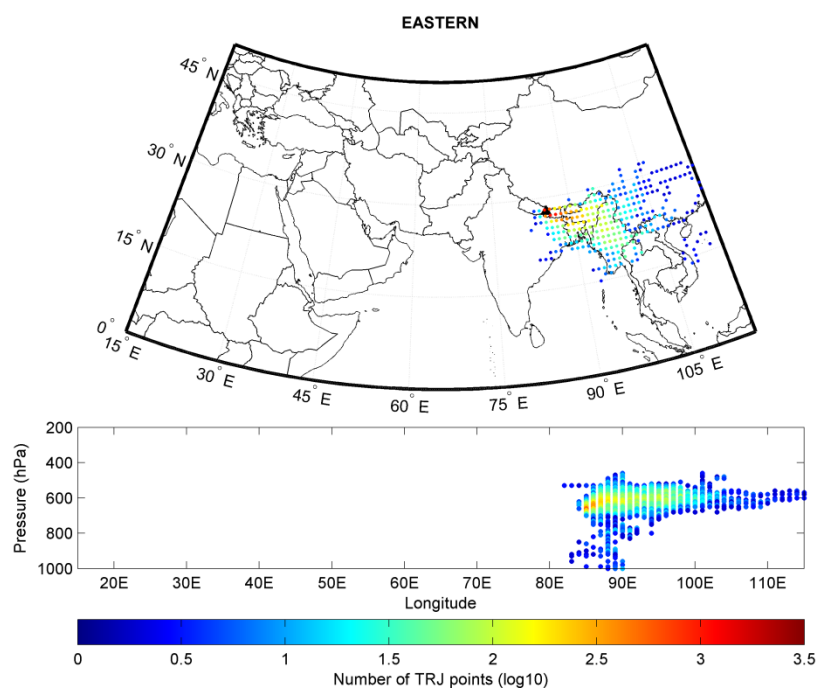
**Figure S7.** Same as Fig. S1, but for Indian Peninsula cluster.



**Figure S8.** Same as Fig. S1, but for Regional cluster.



**Figure S9.** Same as Fig. S1, but for Bay of Bengal cluster.



**Figure S10.** Same as Fig. S1, but for Eastern cluster.